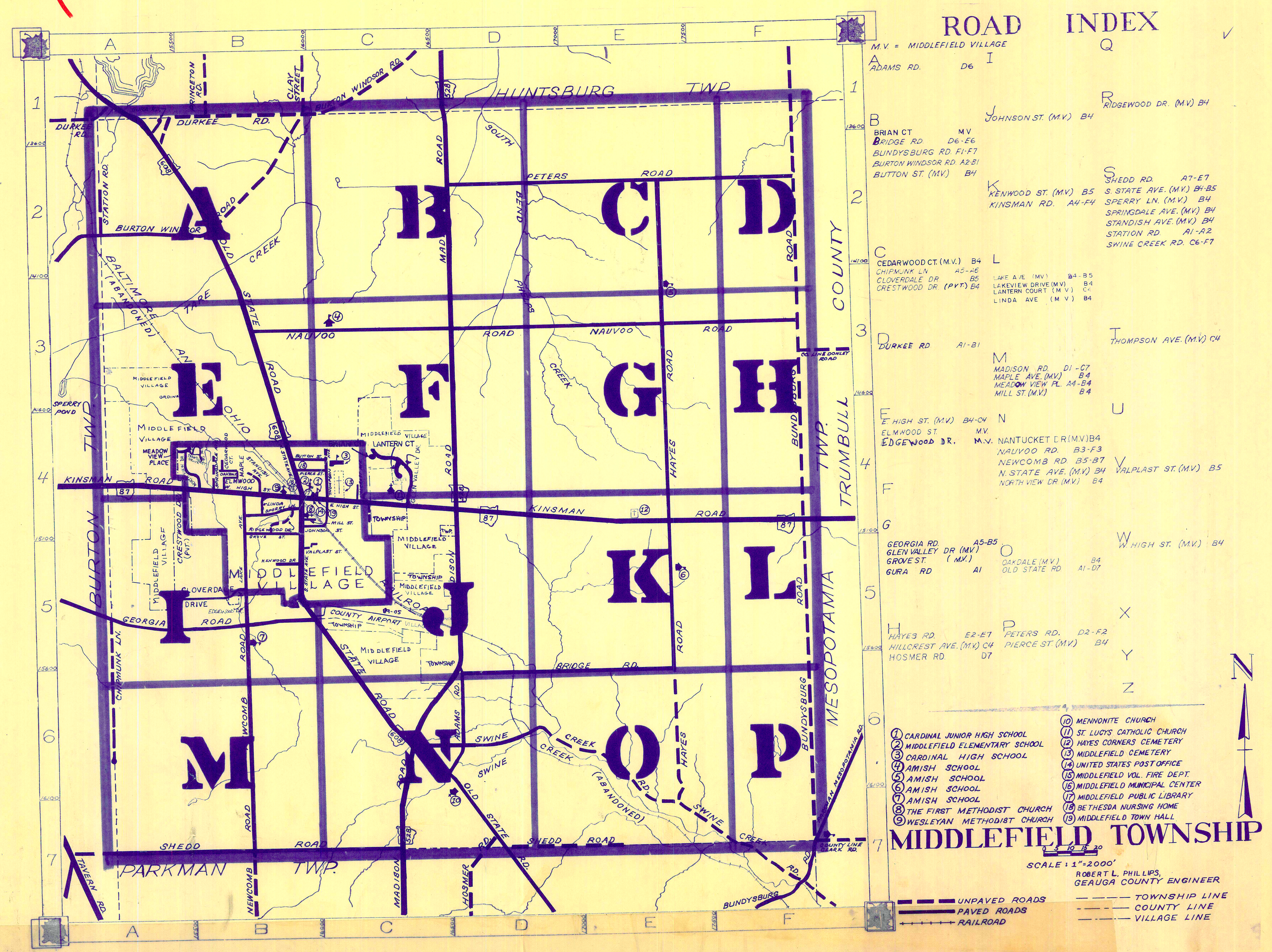


Last Update 12-20-99



# ROAD INDEX

- M.V. = MIDDLEFIELD VILLAGE
- A ADAMS RD. D6 I
  - B BRIAN CT MV  
BRIDGE RD D6-E6  
BUNDYSBURG RD F1-F7  
BURTON WINDSOR RD A2-B1  
BUTTON ST (MV) B4
  - C CEDARWOOD CT (M.V.) B4  
CHIPWALK LN A5-A6  
CLOVERDALE DR B5  
CRESTWOOD DR (PVT) B4
  - D DURKEE RD A1-B1
  - E HIGH ST (M.V.) B4-C4  
ELMWOOD ST MV  
EDGEWOOD DR. M.V.
  - F GEORGIA RD A5-B5  
GLEN VALLEY DR (MV)  
GROVE ST (MV)
  - G HAYES RD E2-E7  
HILLCREST AVE (MV) C4  
HOSMER RD D7
  - H HAYES RD E2-E7  
HILLCREST AVE (MV) C4  
HOSMER RD D7
  - I JOHNSON ST (MV) B4
  - J JOHNSON ST (MV) B4
  - K KENWOOD ST (MV) B5  
KINSMAN RD. A4-F4
  - L LAKE AVE (MV) B4-B5  
LAKEVIEW DRIVE (MV) B4  
LANTERN COURT (M.V.) C4  
LINDA AVE (M.V.) B4
  - M MADISON RD. D1-C7  
MAPLE AVE (MV) B4  
MEADOW VIEW PL A4-B4  
MILL ST (M.V.) B4
  - N NANTUCKET DR (M.V.) B4  
NAUVOO RD. B3-F3  
NEWCOMB RD B5-B7  
N. STATE AVE. (M.V.) B4  
NORTH VIEW DR (M.V.) B4
  - O OAKDALE (M.V.) B4  
OLD STATE RD A1-D7
  - P PETERS RD. D2-F2  
PIERCE ST (MV) B4
  - Q RIDGEWOOD DR. (MV) B4
  - R RIDGEWOOD DR. (MV) B4
  - S SHEDD RD. A7-E7  
S STATE AVE. (MV) B4-B5  
SPERRY LN. (MV) B4  
SPRINGDALE AVE. (MV) B4  
STANDISH AVE. (MV) B4  
STATION RD. A1-A2  
SWINE CREEK RD. C6-F7
  - T THOMPSON AVE. (MV) C4
  - U VALPLAST ST (MV) B5
  - V VALPLAST ST (MV) B5
  - W W HIGH ST. (MV) B4
  - X
  - Y
  - Z

- 1 CARDINAL JUNIOR HIGH SCHOOL
- 2 MIDDLEFIELD ELEMENTARY SCHOOL
- 3 CARDINAL HIGH SCHOOL
- 4 AMISH SCHOOL
- 5 AMISH SCHOOL
- 6 AMISH SCHOOL
- 7 AMISH SCHOOL
- 8 THE FIRST METHODIST CHURCH
- 9 WESLEYAN METHODIST CHURCH
- 10 MENNONITE CHURCH
- 11 ST. LUCY'S CATHOLIC CHURCH
- 12 HAYES CORNERS CEMETERY
- 13 MIDDLEFIELD CEMETERY
- 14 UNITED STATES POST OFFICE
- 15 MIDDLEFIELD VOL. FIRE DEPT.
- 16 MIDDLEFIELD MUNICIPAL CENTER
- 17 MIDDLEFIELD PUBLIC LIBRARY
- 18 BETHESDA NURSING HOME
- 19 MIDDLEFIELD TOWN HALL

**MIDDLEFIELD TOWNSHIP**

SCALE: 1"=2000'

ROBERT L. PHILLIPS,  
GEORGA COUNTY ENGINEER

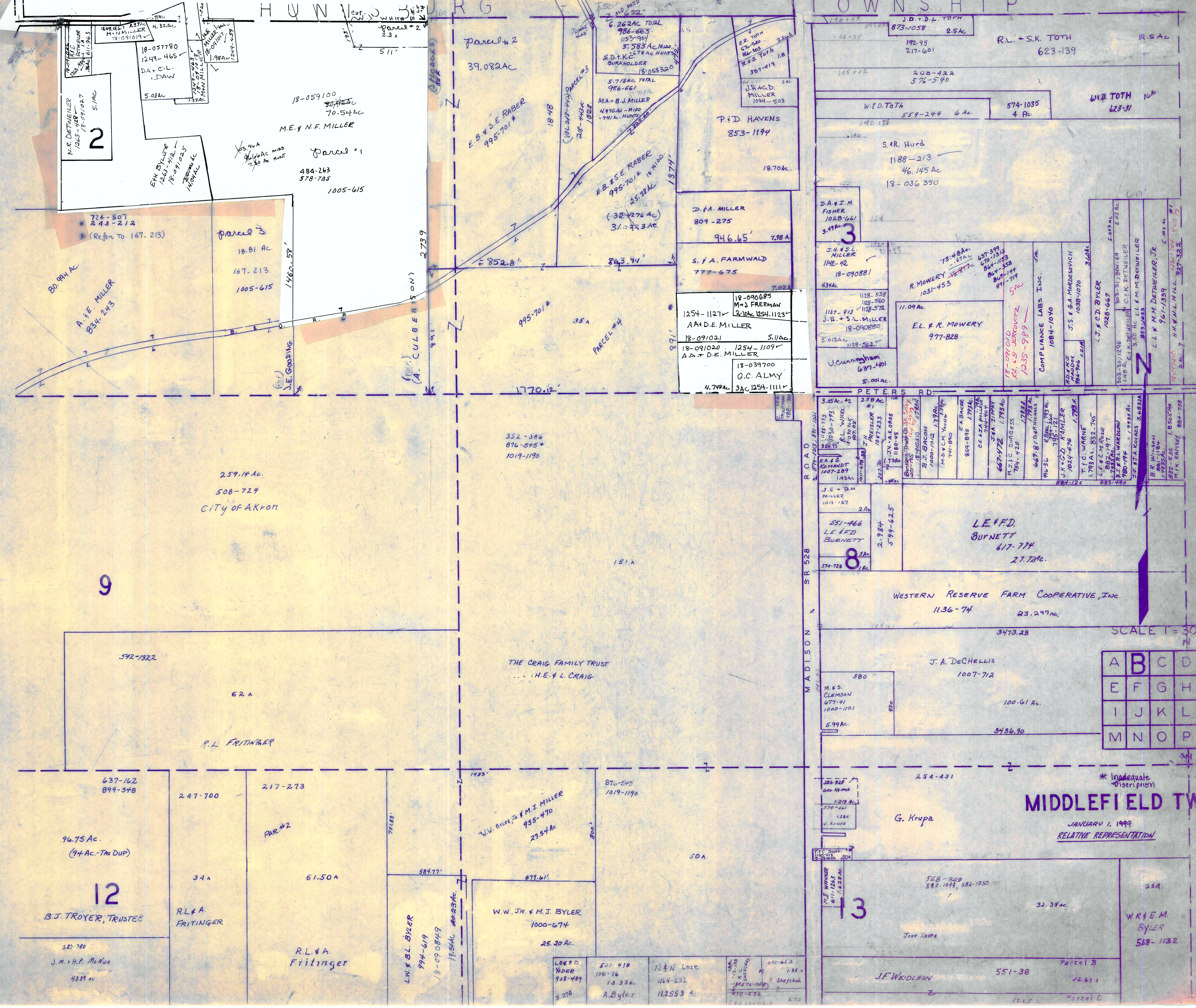
UNPAVED ROADS  
PAVED ROADS  
RAILROAD

TOWNSHIP LINE  
COUNTY LINE  
VILLAGE LINE



HUNTER

OWNSHIP



Parcel 2

Parcel 1

Parcel 3

9

12

13

A	B	C	D
E	F	G	H
I	J	K	L
M	N	O	P

**MIDDLEFIELD TWP.**  
 JANUARY 1, 1999  
 RELATIVE REPRESENTATION

SCALE 1" = 300'

PETERS RD. MADISON SR 528

CITY OF AKRON

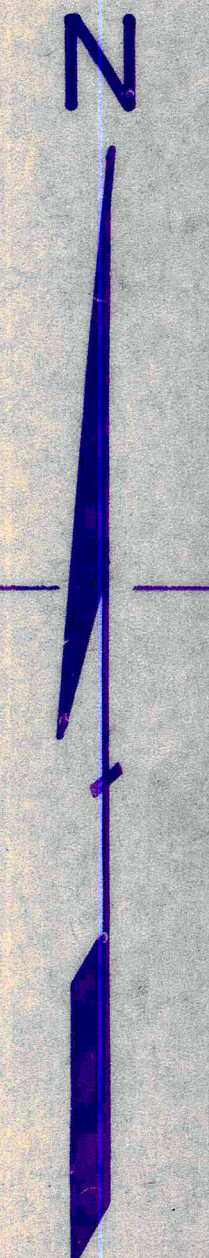
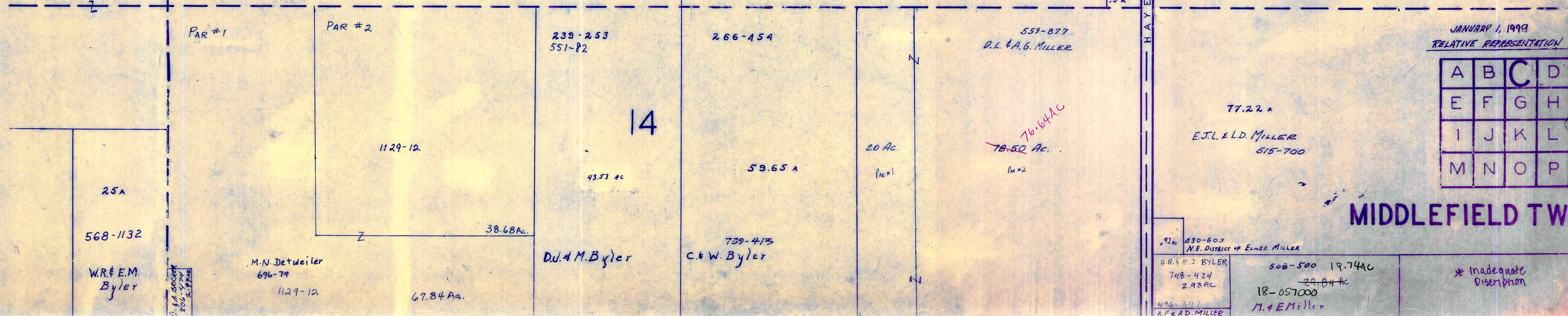
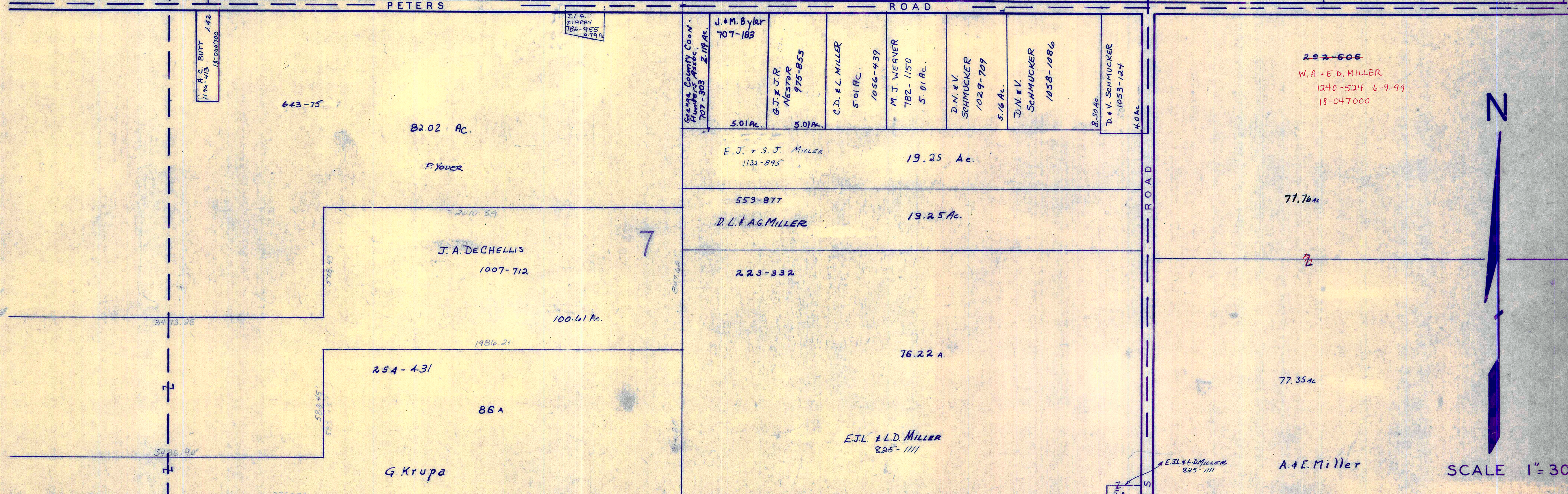
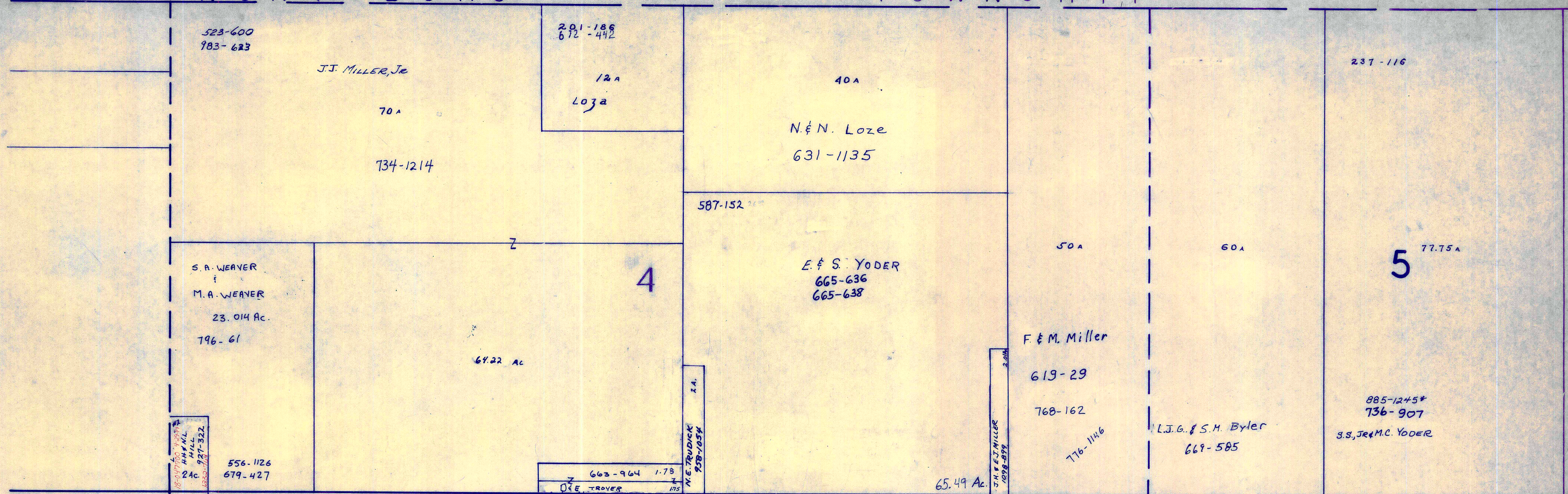
\* Inadequate Description

Parcel B

Parcel C

HUNTSBURG

TOWNSHIP



SCALE 1" = 300'

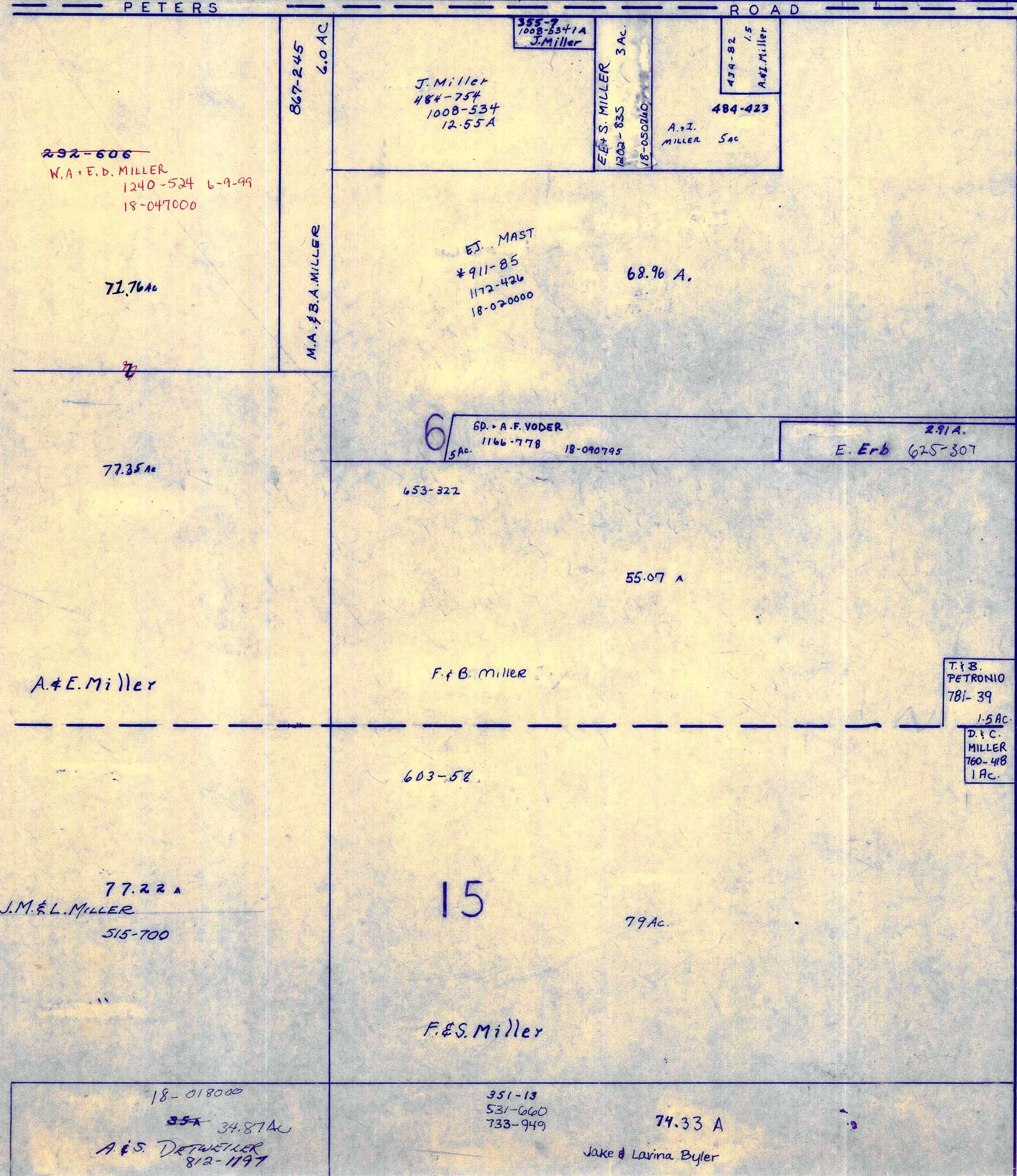
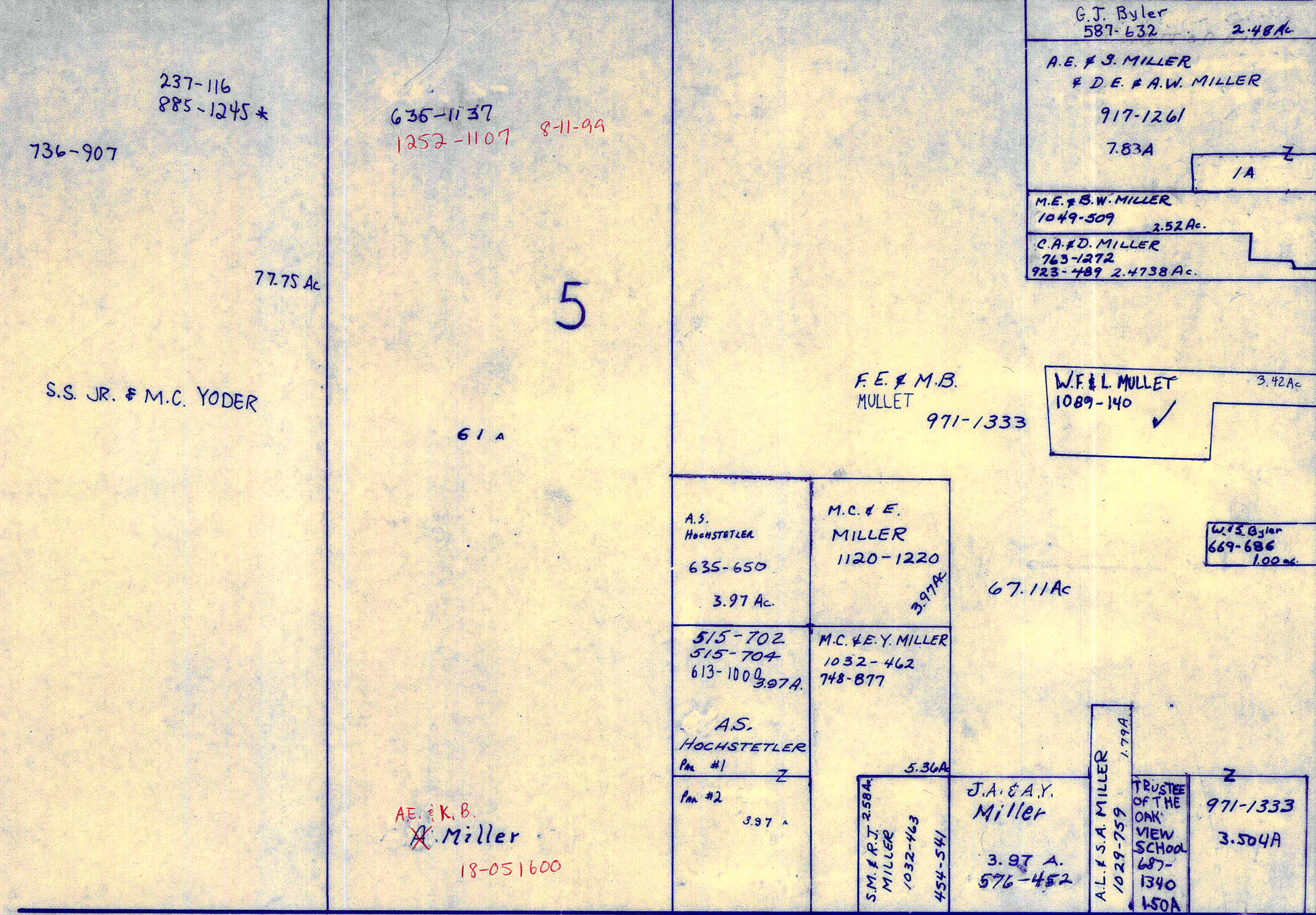
JANUARY 1, 1999  
RELATIVE REPRESENTATION

A	B	C	D
E	F	G	H
I	J	K	L
M	N	O	P

MIDDLEFIELD TWP

\* Inadequate Description

HUNTSBURG TOWNSHIP



TRUMBULL COUNTY



SCALE 1" = 300'

JANUARY 1, 1999  
RELATIVE REPRESENTATION

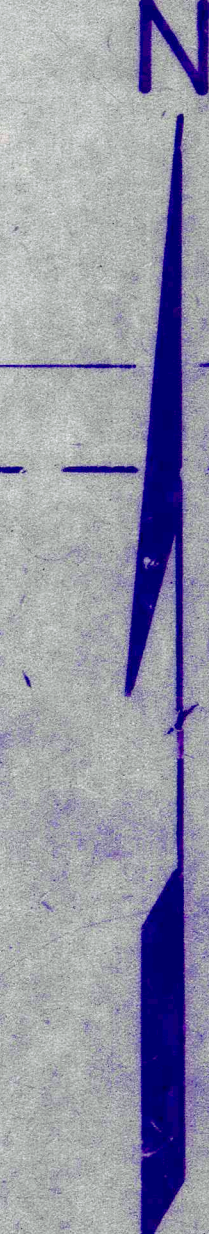
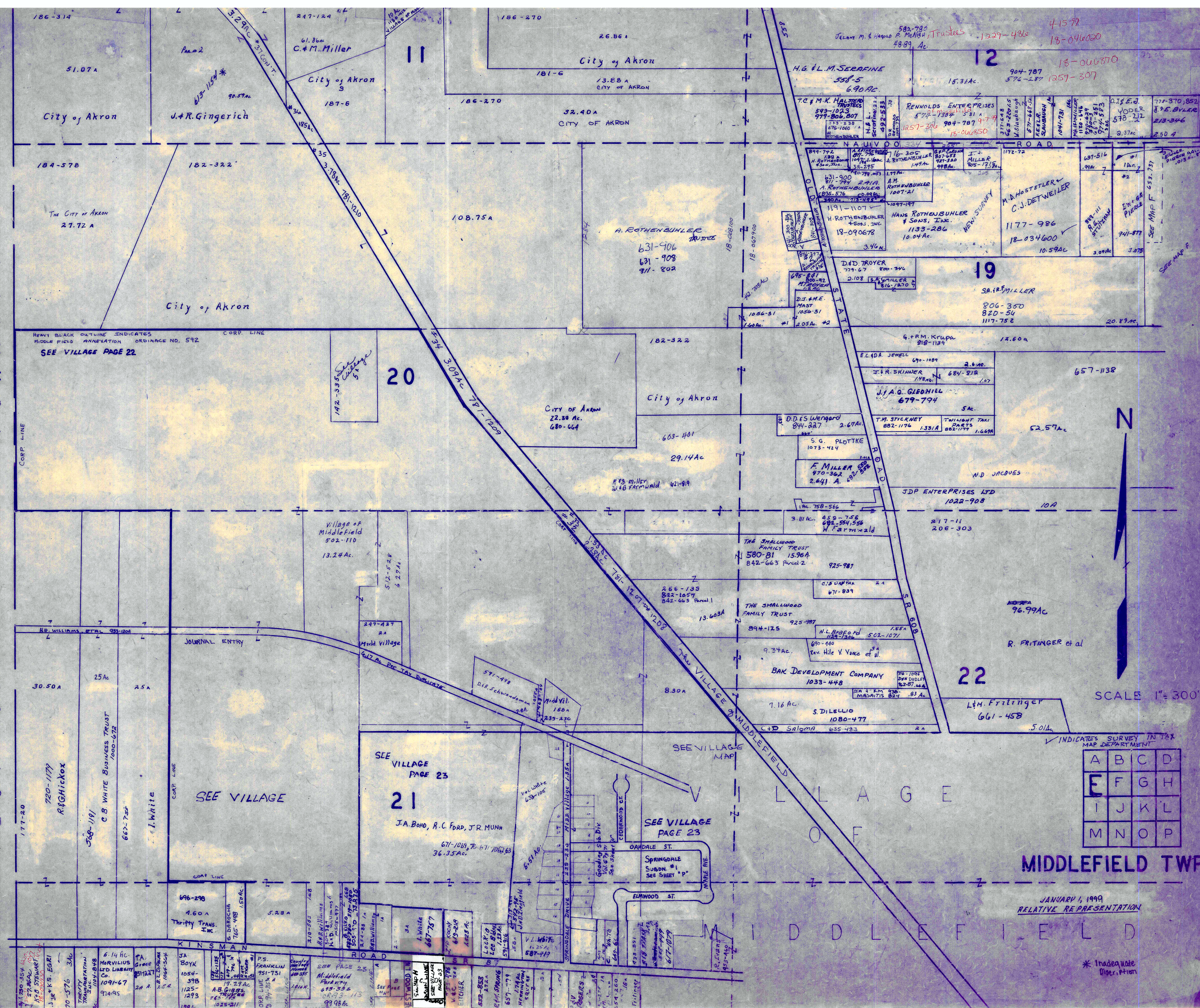
A	B	C	D
E	F	G	H
I	J	K	L
M	N	O	P

\* Inadequate Description

MIDDLEFIELD TWP

TOWNSHIP

BURTON



SCALE 1" = 300'

INDICATES SURVEY IN TAX MAP DEPARTMENT

A	B	C	D
E	F	G	H
I	J	K	L
M	N	O	P

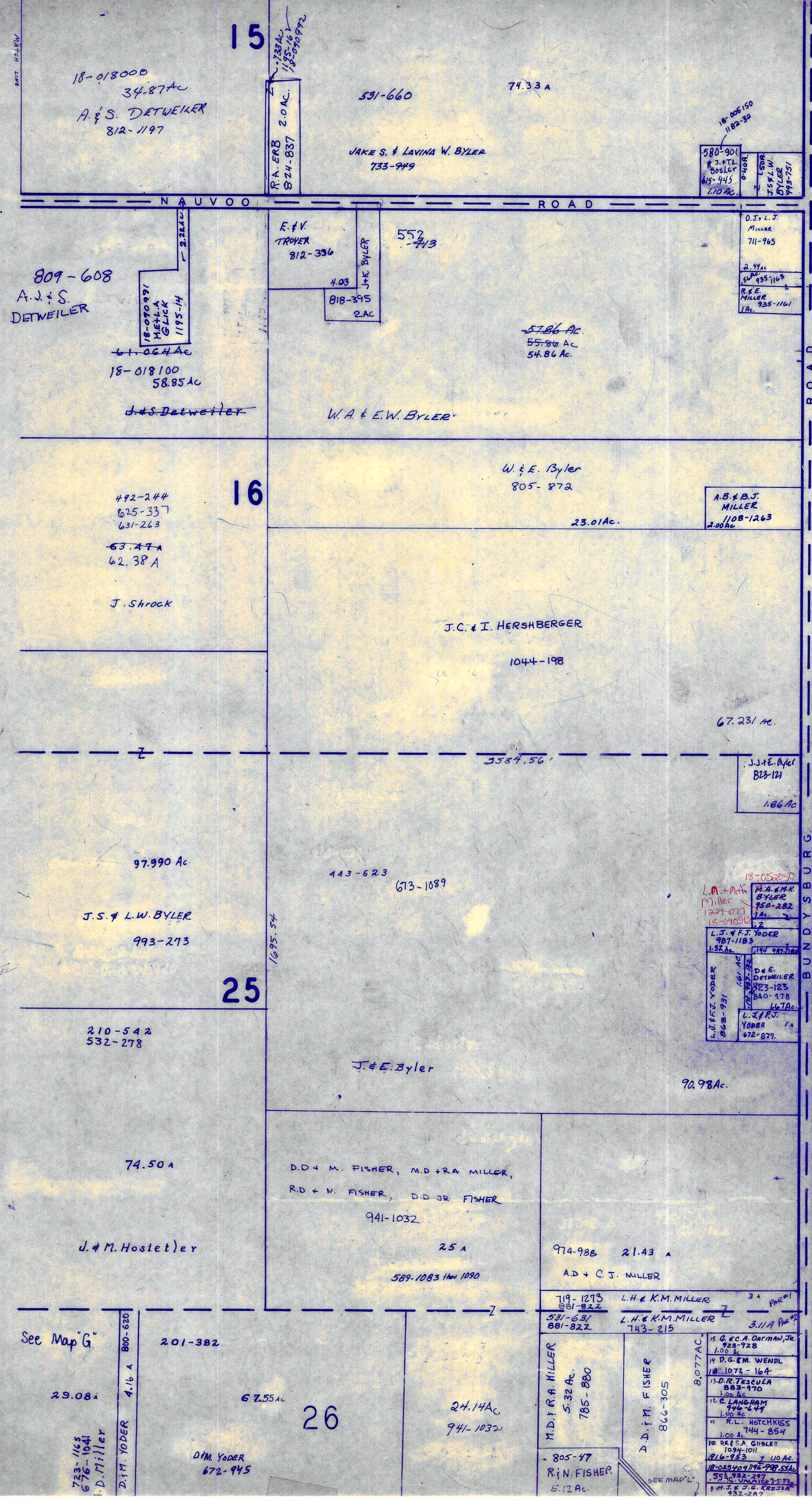
MIDDLEFIELD TWP

JANUARY 1, 1999  
RELATIVE REPRESENTATION

\* Inadequate  
Determination



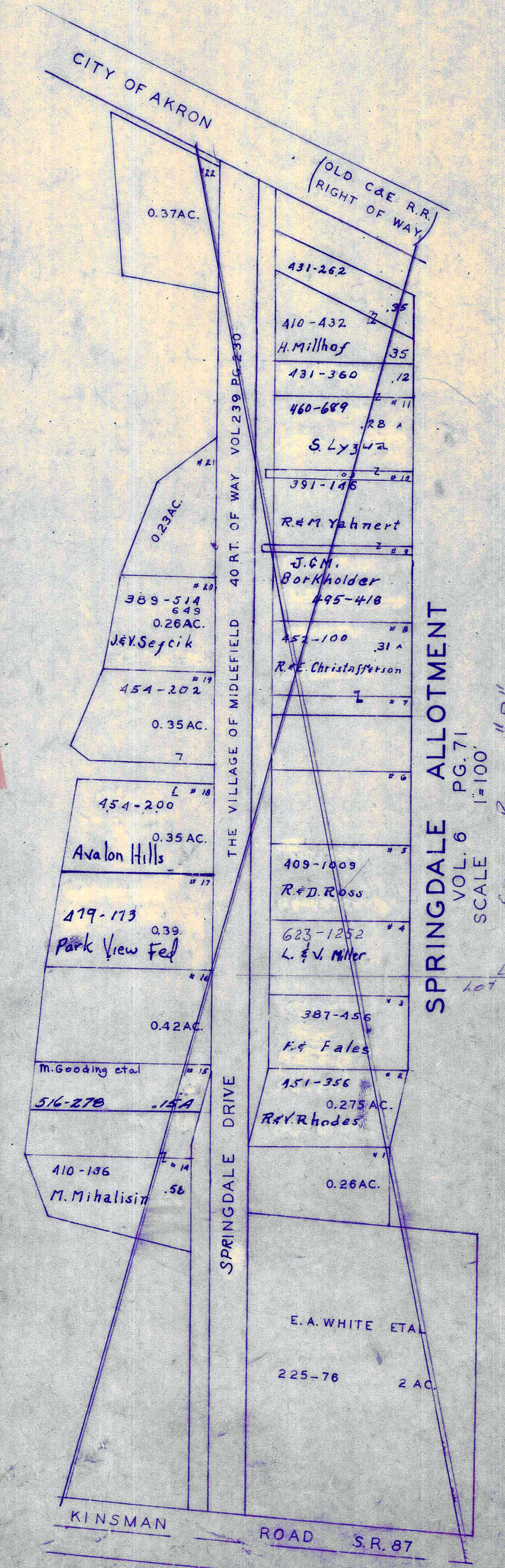




T R U M B U L L C O U N T Y

315-363 Agreement of Restriction  
CRESTWOOD SUB.DIV.  
VOL. 6 PG. 77  
LOT 30  
SCALE 1"=200'

1	2	3	4	5	6	7	8	9	10	11	12	13	14	15	16	17	18	19	20	21	22	23	24	25	26	27	28	29	30
W. & E. BYLER	M. & F. D. TITMUS	M. & F. D. TITMUS	M. & F. D. TITMUS	M. & F. D. TITMUS	M. & F. D. TITMUS	M. & F. D. TITMUS	M. & F. D. TITMUS	M. & F. D. TITMUS	M. & F. D. TITMUS	M. & F. D. TITMUS	M. & F. D. TITMUS	M. & F. D. TITMUS	M. & F. D. TITMUS	M. & F. D. TITMUS	M. & F. D. TITMUS	M. & F. D. TITMUS	M. & F. D. TITMUS	M. & F. D. TITMUS	M. & F. D. TITMUS	M. & F. D. TITMUS	M. & F. D. TITMUS	M. & F. D. TITMUS	M. & F. D. TITMUS	M. & F. D. TITMUS	M. & F. D. TITMUS	M. & F. D. TITMUS	M. & F. D. TITMUS	M. & F. D. TITMUS	M. & F. D. TITMUS

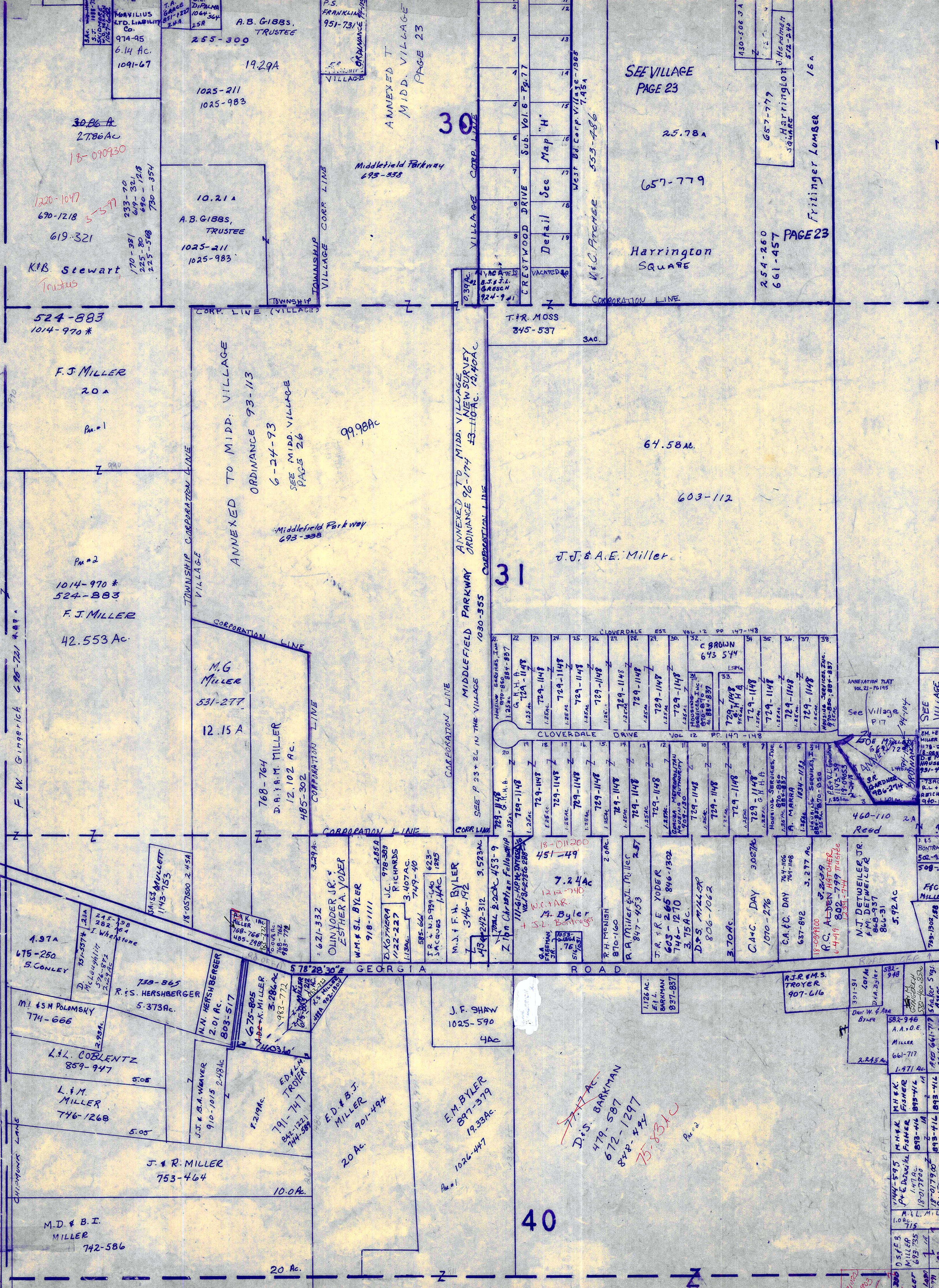


BURTON TOWNSHIP

MIDDLEFIELD

29

NEWCOMB & GEORGIA ROADS  
1. I. CARRAHER 1104-663 .25  
2. A.L. GINGERICH 577-677 .18  
3. A. GINGERICH 1095-1094 .0084



VILLAGE 32

- CORP. LINE
- \*1 GEN. IND. AN OHIO CORP Vol. 282 Pg. 320
  - \*1 GEN. IND. A DELAWARE CORP PARCEL 1 332 - 390
  - \*2 GEN. IND. 223 - 25 367 - 392
  - \*3 GEN. IND. 233 - 50
  - \*3 GEN. IND. A DELAWARE CORP PARCEL 1 332 - 390
  - \*4 GEN. IND. 237 - 100
  - \*4 GEN. IND. A DELAWARE CORP PARCEL 2 332 - 390
  - \*5 GEN. IND. 286 - 226
  - \*5 GEN. IND. A DELAWARE CORP PARCEL 3 332 - 390
  - \*6 GEN. IND. CO. 362 - 562
  - \*6 GEN. IND. A DELAWARE CORP 700-1072
  - \*8 E. YOUNG ET AL 259 - 314

SCALE 1"=300'  
J. Carpenter Hudson, Trustee of  
E. BURRIDGE TRUST, Executor of  
1808000-PARKIN 5046, Executor of  
PARSONS-JOHN CARPENTER FAMILY  
1808000-29197, Foundation  
1808000-29197, 1808000-29197

A	B	C	D
E	F	G	H
I	J	K	L
M	N	O	P

MIDDLEFIELD TWP

39

RELATIVE REPRESENTATION

\* Inadequate description



EAST HIGH STREET

MIDDLEFIELD

VILLAGE

MAP OFF

MAP OFF

33

N

SCALE 1" = 300'

MIDDLEFIELD TWP.

JANUARY 1, 1999

RELATIVE REPRESENTATION

\* Inadequate description

SEE MAP "K"

A	B	C	D
E	F	G	H
I	J	K	L
M	N	O	P

INDICATES SURVEY ON FILE

17.818 AC

W. SR. J. PARNABY

926-572

4.276 AC

M.G. HERSHBERGER

1116-1124

25.822 AC

J.C. KOCHY

704-157

38.08 AC

635-719

991-780

L. KEPPLER, M.D.

A.D. STEFFEE, M.D.

R.S. BISCUF, DO.

(TRUSTEES)

1221-307

3-4-99

100.56 AC

18-046000

PARCEL # 2

82.94 AC

18-042500

PARCEL # 1

218-513

991-780

635-713

3-4-99

R. BONNER

1052-1237, 1243, 1247

1145-1296

11 AC

CORP. LINE

862-86

DeFINO REALTY CO.

5.831 AC

862-107

PUMPHOUSE PARTNERSHIP

4.169 AC

862-104

R. BONNER

145-181

19-080986

19-080985

4.74 AC

VOL 24-105

11 AC

ANNEXED ORDINANCE 96-173

815-1193

M. MIHALISIN

5.03 AC

CORPORATION

832-26

41-200 AC

D.M. STROHM, TRUSTEE

95-749

VOL 24-105

ANNEXED TO VILLAGE

NEW CORPORATE LINE

ANNEXED TO VILLAGE

ANNEXED TO VILLAGE

ANNEXED TO VILLAGE

ANNEXED TO VILLAGE

ANNEXED TO VILLAGE

ANNEXED TO VILLAGE

ANNEXED TO VILLAGE

ANNEXED TO VILLAGE

ANNEXED TO VILLAGE

ANNEXED TO VILLAGE

ANNEXED TO VILLAGE

ANNEXED TO VILLAGE

ANNEXED TO VILLAGE

ANNEXED TO VILLAGE

ANNEXED TO VILLAGE

ANNEXED TO VILLAGE

ANNEXED TO VILLAGE

ANNEXED TO VILLAGE

ANNEXED TO VILLAGE

ANNEXED TO VILLAGE

ANNEXED TO VILLAGE

ANNEXED TO VILLAGE

ANNEXED TO VILLAGE

ANNEXED TO VILLAGE

ANNEXED TO VILLAGE

ANNEXED TO VILLAGE

ANNEXED TO VILLAGE

ANNEXED TO VILLAGE

ANNEXED TO VILLAGE

ANNEXED TO VILLAGE

ANNEXED TO VILLAGE

ANNEXED TO VILLAGE

ANNEXED TO VILLAGE

ANNEXED TO VILLAGE

ANNEXED TO VILLAGE

ANNEXED TO VILLAGE

ANNEXED TO VILLAGE

ANNEXED TO VILLAGE

ANNEXED TO VILLAGE

ANNEXED TO VILLAGE

ANNEXED TO VILLAGE

ANNEXED TO VILLAGE

ANNEXED TO VILLAGE

ANNEXED TO VILLAGE

ANNEXED TO VILLAGE

ANNEXED TO VILLAGE

ANNEXED TO VILLAGE

ANNEXED TO VILLAGE

ANNEXED TO VILLAGE

ANNEXED TO VILLAGE

ANNEXED TO VILLAGE

ANNEXED TO VILLAGE

ANNEXED TO VILLAGE

ANNEXED TO VILLAGE

ANNEXED TO VILLAGE

ANNEXED TO VILLAGE

ANNEXED TO VILLAGE

ANNEXED TO VILLAGE

ANNEXED TO VILLAGE

ANNEXED TO VILLAGE

ANNEXED TO VILLAGE

ANNEXED TO VILLAGE

ANNEXED TO VILLAGE

ANNEXED TO VILLAGE

ANNEXED TO VILLAGE

ANNEXED TO VILLAGE

ANNEXED TO VILLAGE

ANNEXED TO VILLAGE

ANNEXED TO VILLAGE

ANNEXED TO VILLAGE

ANNEXED TO VILLAGE

ANNEXED TO VILLAGE

ANNEXED TO VILLAGE

ANNEXED TO VILLAGE

ANNEXED TO VILLAGE

ANNEXED TO VILLAGE

ANNEXED TO VILLAGE

ANNEXED TO VILLAGE

ANNEXED TO VILLAGE

ANNEXED TO VILLAGE

ANNEXED TO VILLAGE

ANNEXED TO VILLAGE

ANNEXED TO VILLAGE

ANNEXED TO VILLAGE

ANNEXED TO VILLAGE

ANNEXED TO VILLAGE

ANNEXED TO VILLAGE

ANNEXED TO VILLAGE

ANNEXED TO VILLAGE

ANNEXED TO VILLAGE

ANNEXED TO VILLAGE

ANNEXED TO VILLAGE

ANNEXED TO VILLAGE

ANNEXED TO VILLAGE

ANNEXED TO VILLAGE

ANNEXED TO VILLAGE

ANNEXED TO VILLAGE

ANNEXED TO VILLAGE

ANNEXED TO VILLAGE

ANNEXED TO VILLAGE

ANNEXED TO VILLAGE

ANNEXED TO VILLAGE

ANNEXED TO VILLAGE

ANNEXED TO VILLAGE

ANNEXED TO VILLAGE

ANNEXED TO VILLAGE

ANNEXED TO VILLAGE

ANNEXED TO VILLAGE

ANNEXED TO VILLAGE

ANNEXED TO VILLAGE

ANNEXED TO VILLAGE

ANNEXED TO VILLAGE

ANNEXED TO VILLAGE

ANNEXED TO VILLAGE

ANNEXED TO VILLAGE

ANNEXED TO VILLAGE

ANNEXED TO VILLAGE

ANNEXED TO VILLAGE

ANNEXED TO VILLAGE

ANNEXED TO VILLAGE

ANNEXED TO VILLAGE

ANNEXED TO VILLAGE

ANNEXED TO VILLAGE

ANNEXED TO VILLAGE

ANNEXED TO VILLAGE

ANNEXED TO VILLAGE

ANNEXED TO VILLAGE

ANNEXED TO VILLAGE

ANNEXED TO VILLAGE

ANNEXED TO VILLAGE

ANNEXED TO VILLAGE

ANNEXED TO VILLAGE

ANNEXED TO VILLAGE

ANNEXED TO VILLAGE

ANNEXED TO VILLAGE

ANNEXED TO VILLAGE

ANNEXED TO VILLAGE

ANNEXED TO VILLAGE

ANNEXED TO VILLAGE

ANNEXED TO VILLAGE

ANNEXED TO VILLAGE

ANNEXED TO VILLAGE

ANNEXED TO VILLAGE

ANNEXED TO VILLAGE

ANNEXED TO VILLAGE

ANNEXED TO VILLAGE

ANNEXED TO VILLAGE

ANNEXED TO VILLAGE

ANNEXED TO VILLAGE

ANNEXED TO VILLAGE

ANNEXED TO VILLAGE

ANNEXED TO VILLAGE

ANNEXED TO VILLAGE

ANNEXED TO VILLAGE

ANNEXED TO VILLAGE

ANNEXED TO VILLAGE

ANNEXED TO VILLAGE

ANNEXED TO VILLAGE

ANNEXED TO VILLAGE

ANNEXED TO VILLAGE

ANNEXED TO VILLAGE

ANNEXED TO VILLAGE

ANNEXED TO VILLAGE

ANNEXED TO VILLAGE

ANNEXED TO VILLAGE

ANNEXED TO VILLAGE

ANNEXED TO VILLAGE

ANNEXED TO VILLAGE

ANNEXED TO VILLAGE

ANNEXED TO VILLAGE

ANNEXED TO VILLAGE

ANNEXED TO VILLAGE

ANNEXED TO VILLAGE

ANNEXED TO VILLAGE

ANNEXED TO VILLAGE

ANNEXED TO VILLAGE

ANNEXED TO VILLAGE

ANNEXED TO VILLAGE

ANNEXED TO VILLAGE

ANNEXED TO VILLAGE

ANNEXED TO VILLAGE

ANNEXED TO VILLAGE

ANNEXED TO VILLAGE

ANNEXED TO VILLAGE

ANNEXED TO VILLAGE

ANNEXED TO VILLAGE

ANNEXED TO VILLAGE

ANNEXED TO VILLAGE

ANNEXED TO VILLAGE

ANNEXED TO VILLAGE

ANNEXED TO VILLAGE

ANNEXED TO VILLAGE

ANNEXED TO VILLAGE

ANNEXED TO VILLAGE

ANNEXED TO VILLAGE

ANNEXED TO VILLAGE

ANNEXED TO VILLAGE

ANNEXED TO VILLAGE

ANNEXED TO VILLAGE

ANNEXED TO VILLAGE

ANNEXED TO VILLAGE

ANNEXED TO VILLAGE

ANNEXED TO VILLAGE

ANNEXED TO VILLAGE

ANNEXED TO VILLAGE

ANNEXED TO VILLAGE

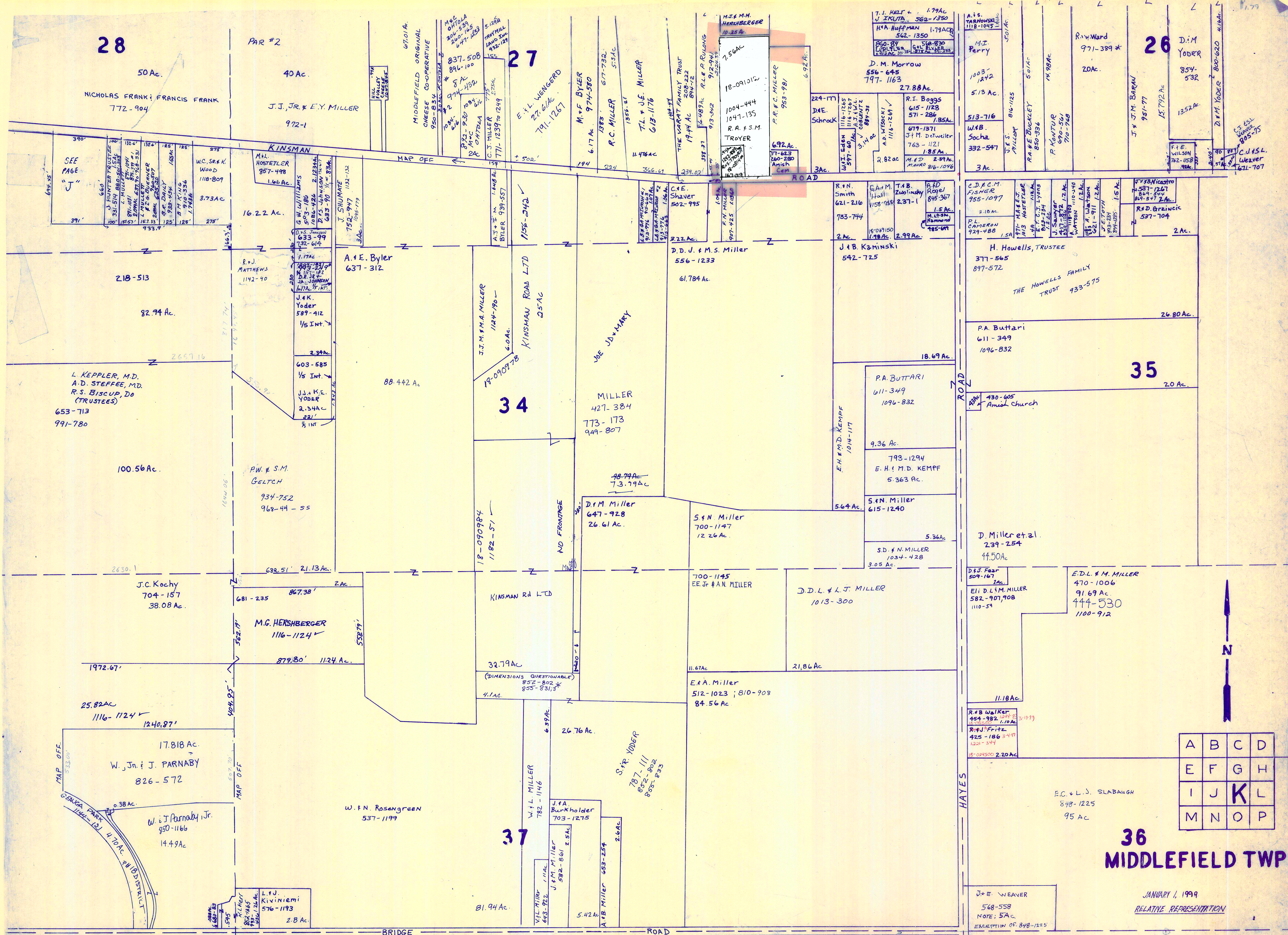
ANNEXED TO VILLAGE

ANNEXED TO VILLAGE

ANNEXED TO VILLAGE

ANNEXED TO VILLAGE

ANNEXED TO VILLAGE



28

27

26

34

35

37

36

MIDDLEFIELD TWP.

A	B	C	D
E	F	G	H
I	J	K	L
M	N	O	P

JANUARY 1, 1999  
RELATIVE REPRESENTATION

\* Inadequate description

SEE PAGE "J"

L. KEPPLER, M.D.  
A.D. STEFFEE, M.D.  
R.S. BISCUP, DO  
(TRUSTEES)  
653-713  
991-780

W. Jn & J. PARNABY  
826-572

W. & J. Parnaby, Jr.  
950-1166  
14.49 Ac.

J.J., JR. & E.Y. MILLER  
972-1

A. & E. Byler  
637-312

J. & K. Yoder  
589-412  
1/5 Int.

J.J. & K.E. Yoder  
2.34 Ac.  
1/2 Int.

P.W. & S.M. GELTCH  
934-752  
962-44-55

J.C. Kochy  
704-157  
38.08 Ac.

M.G. HERSHBERGER  
1116-1124

879.80' 1124 Ac.

W.F.N. Rosengreen  
537-1199

81.94 Ac.

D.D. J. & M.S. Miller  
556-1233  
61.784 Ac.

MILLER  
427-384  
773-173  
949-807

D.M. Miller  
647-928  
26.61 Ac.

S. & N. Miller  
700-1147  
12.26 Ac.

700-1145  
E.E. & F.A.N. MILLER

E. & A. Miller  
512-1023 ; 810-908  
84.56 Ac.

D.D.L. & L.J. MILLER  
1013-300

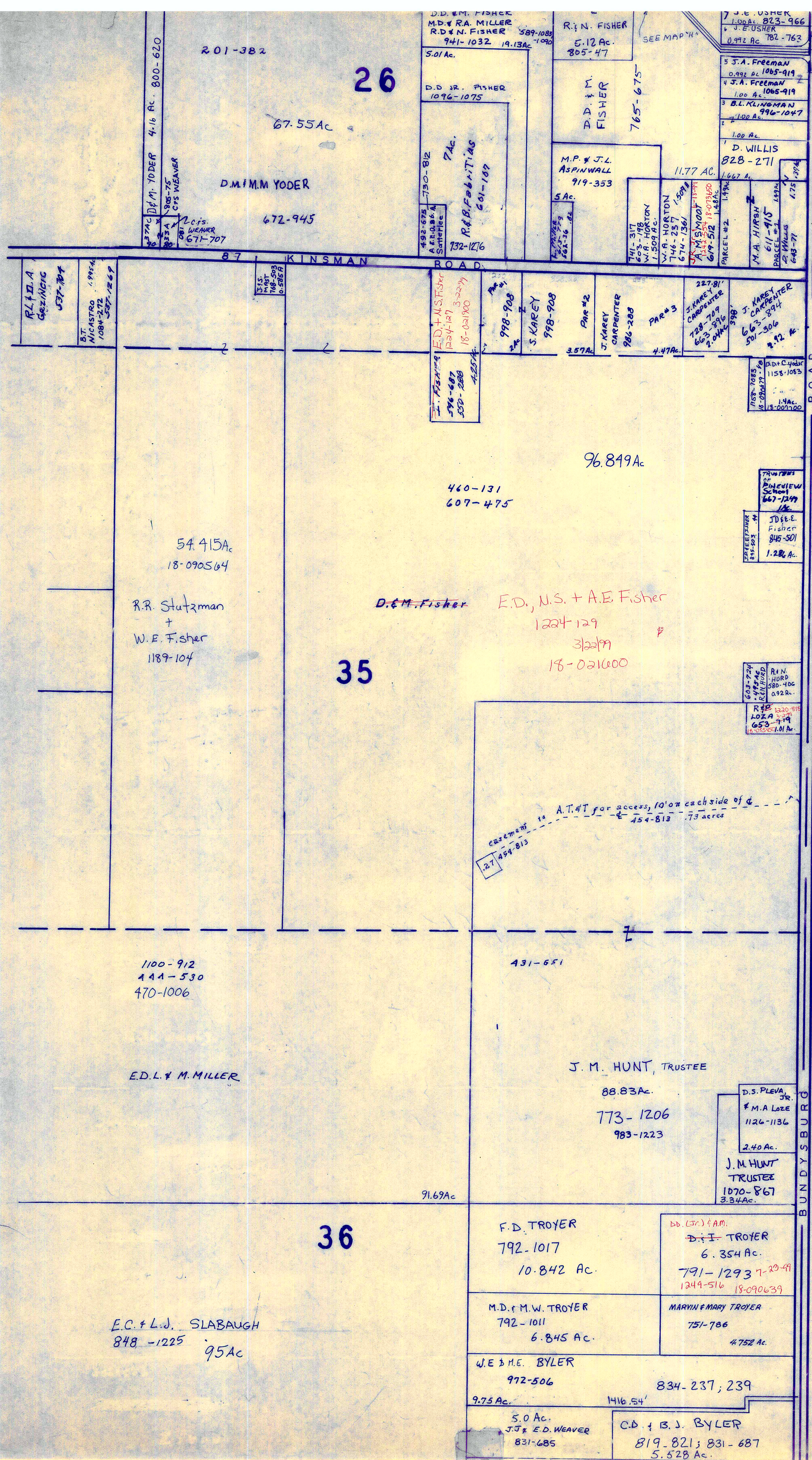
21.86 Ac.

J. & E. WEAVER  
568-558  
NOTE: 5A.C.  
EXCEPTION OF: 848-1225

E.C. & L.J. SLABAUGH  
848-1225  
95 Ac.

JANUARY 1, 1999  
RELATIVE REPRESENTATION

\* Inadequate description



T R U M B U L L C O U N T Y



SCALE 1" = 300'

JANUARY 6, 1999

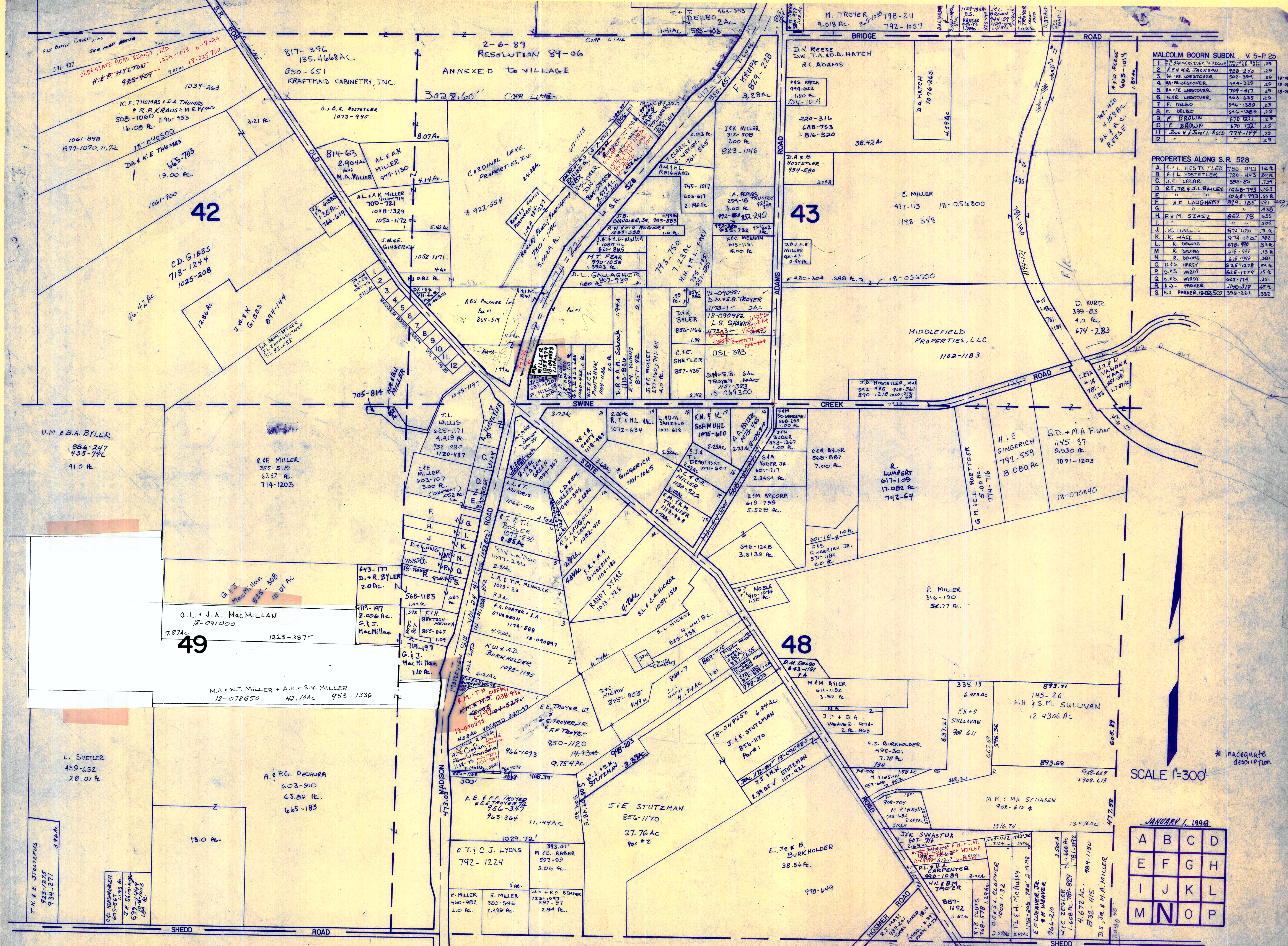
A	B	C	D
E	F	G	H
I	J	K	L
M	N	O	P

**MIDDLEFIELD TWP.**

RELATIVE REPRESENTATION

\* Inadequate Description





MALCOLM BOORN SUBDN. V 5-P 25

1	P. BRUMGARTNER, TR. EXEC.	767-247	12.25
2	R. E. W. JACKSON	988-390	2.5
3	M. F. WESTOVER	522-324	2.5
4	M. F. WESTOVER	444-329	2.5
5	M. F. WESTOVER	709-417	2.5
6	M. F. WESTOVER	463-635	2.5
7	F. DELBO	546-1389	2.5
8	F. DELBO	546-1389	2.5
9	F. DELBO	546-1389	2.5
10	F. DELBO	546-1389	2.5
11	John W. J. Reed	774-147	2.5
12			

PROPERTIES ALONG S.R. 528

A	R. L. HOSTETLER	786-443	12.8
B	R. L. HOSTETLER	786-443	80.8
C	J. C. LARAK	585-85	7.54
D	R. T. JR. & J. L. BAILEY	1048-747	12.3
E	A. F. LAUGHERY	829-785	12.9
F	"	"	12.9
G	"	"	12.9
H	E. M. SZASZ	662-78	6.55
I	"	"	3.05
J	K. HALL	974-1192	7.1
K	K. HALL	974-1192	3.82
L	R. DEONG	678-712	13.8
M	R. DEONG	678-712	13.8
N	R. DEONG	678-712	13.8
O	D. S. HARDY	625-1278	5.4
P	D. S. HARDY	625-1278	15.8
Q	D. S. HARDY	625-1278	15.8
R	H. J. PARKER	1140-319	65.8
S	H. J. PARKER	1140-319	332

\* inadequate description  
SCALE 1"=300'

JANUARY 1, 1999

A	B	C	D
E	F	G	H
I	J	K	L
M	N	O	P



45

WHITE FORD WOODS Co.  
500 AC  
775-396

311-179

775-396

46

831-601 to 604  
TOTAL: 778.796 AC.  
{ MIDD: 731.7798 AC }  
{ PARK: 47.0162 AC }

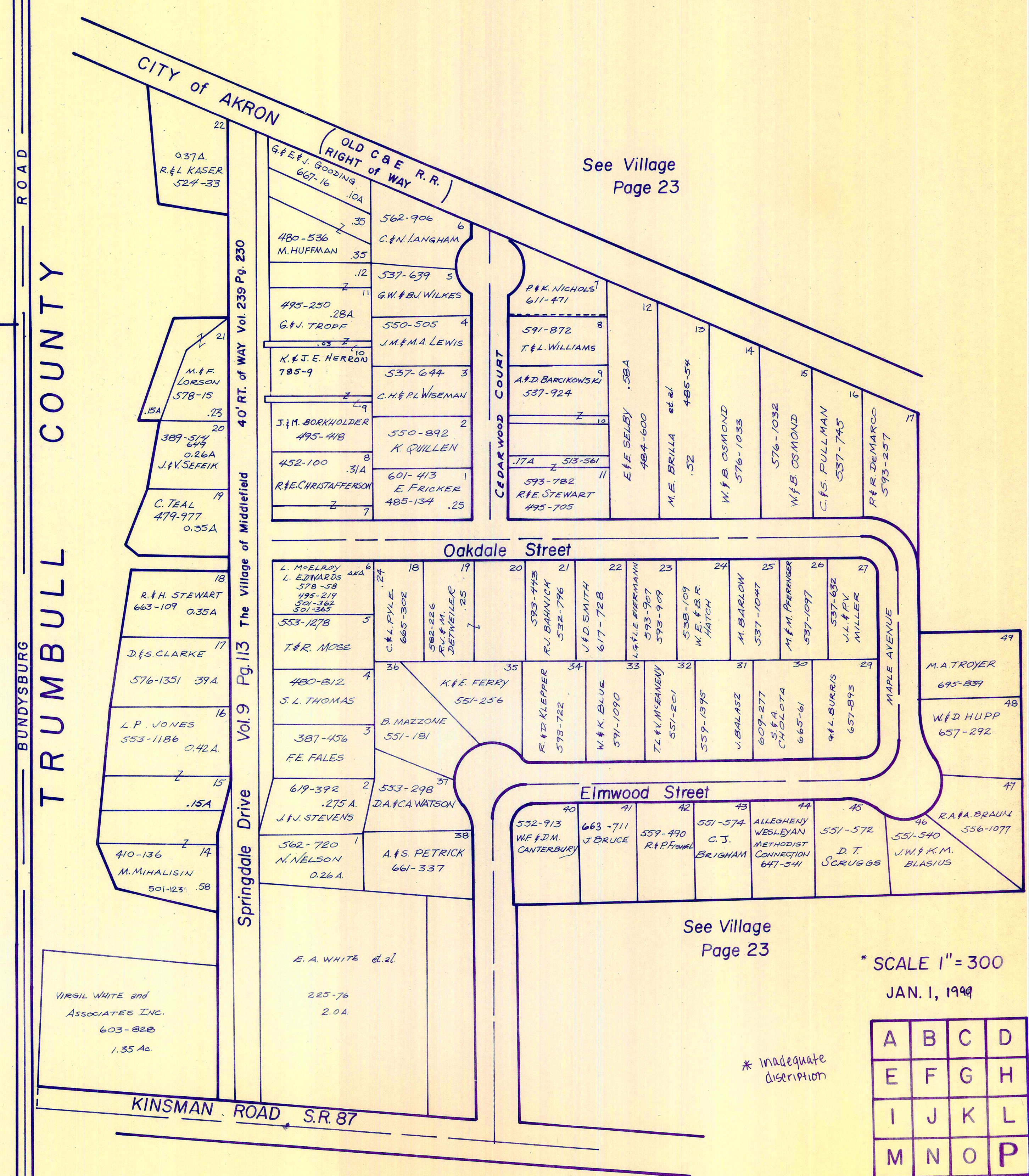
685-71

TAX DUPLICATE  
(281-57 AC TOTAL)  
F. Ford  
(TRUSTEE)

SWINE CREEK ROAD

PARKMAN TWP

TWR



See Village Page 23

See Village Page 23

SCALE 1" = 300  
JAN. 1, 1949

A	B	C	D
E	F	G	H
I	J	K	L
M	N	O	P

MIDDLEFIELD TWP  
RELATIVE REPRESENTATION

APP 1 610791661M

\* Inadequate description

\* ONLY TWP MAP

4/11/49